

# Kids Rock™ & Bingo™

*Movement  
is Life*



Partnering together to mobilize kids™

# BINGO™ REHAB TILT AND RECLINE PUSH CHAIR



**BINGO XPS**  
Extra Positioning System  
For children who need extra support.

The XPS contoured and configurable seating system provides comfort and therapeutic positioning. Configured to accept numerous positioning components  
Designed for children who need proper positioning support.



Compact Folding



Sunshade



Storage Bag

Mobility Base	Size-1	Size-2
Push Handle Height	30-44"	30-44"
Overall Width of Mobility Base	25"	26.5"
Overall length of Mobility Base	38"	38"
Wheel Diameter, Front, Rigid	9.8"	9.8"
Wheel Diameter, Front, Swiveling	7.5"	7.5"
Wheel Diameter, Rear	9.8"	9.8"
Tilt in Space	45°	45°
Folded Size With Wheels	33x25x14"	33x26.5x14"
Folded Size With Rear Wheels Removed	30x25x14"	30x26.5x14"
Weight	17.6 lbs.	19.8 lbs.
Load Capacity Mobility Base	110 lbs.	110 lbs.
Turning Radius	50"	54"



**BINGO IUS**  
Individual Upholstery System  
Planar seat and back cushions with a number of seating options available.

Seat Shell	Size-1	Size-2
Seat Depth	6.3 to 11.8"	8.2 to 15.7"
Seat Width	7 to 11.8"	9 to 13.7"
Lower Leg Length	6.3 to 13.4"	6.3 to 15.4"
Backrest Height - XPS	12 to 20"	16 to 25"
Backrest Height - IUS	17.7 to 25"	21 to 29.5"
Height of Slots For Shoulder Straps	11 to 18"	13 to 21.5"
Recline	80 to 180°	80 to 180°
Weight	15.4 lbs.	18.7 lbs.

TS

**kids  
UP**

**R&M**  
Health Care Inc.

Proudly distributed in Canada by:  
R & M Health Care Inc.  
790 Redwood Square, Unit 8  
Oakville, Ontario L6L 6N3  
Phone: 866.664.1983 or 905-847-1983 fax 905-847-2708  
www.randmhealthcare.ca info@randmhealthcare.ca

The Kids ROCK enables the child to stretch at the hips and knees while maintaining postural alignment. When the child relaxes, he or she returns to the proper seated position. Resistance and range of motion are adjustable. Numerous positioning accessories and options are available

### What do the experts say about the necessity of movement for all of us when we are seated?

*"The only truly effective way to maintain a seated posture for extended durations is to continuously cycle through a range of natural, centered and healthful positions. This requires a chair that allows users to dynamically shift between a range of stable postures."*

Rani Lueder, CPE Humanics Ergosystems, Inc.

### What do the therapists say?

*"Children who are non-ambulatory and have not developed anti-gravity postural musculature to maintain their body in a variety of postures, consistently have poor to fair muscle strength. The Kids ROCK Chair allows the child to challenge and strengthen these muscle groups as they flex and extend. It is not reasonable to expect the child to strengthen if they do not have the ability to move. Furthermore, children who are "locked into" seating systems with rigid postural supports tend to atrophy. How does one develop head and trunk control without the opportunity to move?"*

Cathy Mulholland, OTR/L



J.D.'s verbal skills have improved dramatically, since he has been able to move in his Kids ROCK Chair



Active hip and knee extension allows freedom of movement for Ian.



Secondary supports help Ian sit in proper alignment.

### What do parents say about their child's ROCK Active System?

*"It's great, because she has got a lot of movement in it. She is able to stretch her back and legs out, whereas in her other wheelchair she felt kinda stuck. She's not stiff like she used to be. I think it's wonderful. It's the best thing that's ever been handed to us."*

Clarissa Huston, Ashlynn's Mother





Tilt-in-Space



Adjustable through many years of growth



Folds for transport



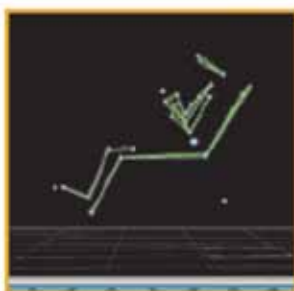
Bus transport (Optional)

### KIDS ROCK ACTIVE FEATURES

- ✎ The ROCK ACTIVE™ feature allows the occupant to move into extension in the chair while maintaining proper positioning and therapeutic support. The system allows up to 35 degrees of hip extension.
- ✎ Anatomic suspension - Each active linkage contains shock absorbers, similar to the joints of the human body.
- ✎ Pivot points determined using pediatric anthropometric data.
- ✎ Adjustable active seat to back angle.
- ✎ Adjustable extension resistance.
- ✎ Adjustable extension range.
- ✎ Easy locking mechanism to prevent active movement.
- ✎ Easy knee lock for multiple fixed knee angle positions.
- ✎ Active-elevating footrest option.
- ✎ Active knee angle option. 30° of active range

A Montana State University researcher has received a research grant from the Thrasher Research Fund (of Salt Lake City) to pursue basic and clinical research into the impact of Kids Up, Inc.'s innovative wheelchair design on functional mobility for children with cerebral palsy. Dr. Michael Hahn is leading a team of graduate students and regional pediatric physical therapists in testing the clinical outcomes. The expected outcomes of the study are: 1) increased range of motion and functional mobility in the hip, knee, and ankle joints, 2) decreased muscle spasticity 3) enhancement of independent daily function.

"When we look at the computer generated model, you can see that Stephen has considerable dynamic movement. He is able to flex and come back into his original position without displacing his pelvis."  
Cathy Mulholland OTR/L



### KIDS ROCK GROWTH & ADJUSTABILITY

- ✎ Tilt in space (5° anterior to 45° posterior) Pivots near center of gravity
- ✎ Hip angle Positions (82° , 90° , 98° or 106°)
- ✎ Back height ,with optional back plate(12" to 21.5")
- ✎ Seat depth (10" to 16")
- ✎ Seat width (8" to 13.5")
- ✎ Lower leg length (10" to 17")
- ✎ Dorsal planter angle (±8° standard, -18 to +45° auto adjust optional)

Specifications	
Length (rear wheels removed)	27"
Width (rear wheels removed)	23"
Height (seat back folded down)	22"
Overall Length (with rear wheels)	28 to 36"
Overall Width (with rear wheels)	26"
Folded height (seat folded w/rear wheels)	27"
Caster diameter, front	6 or 8"
Wheel diameter, rear	16, 20, 22, 24"
Weight of chair w/o rear wheels or leg rest	32 lbs.
Turning radius	46"
Floor to seat height (6" / 8" casters)	16.5 / 18.5"
Transit Weight Limit	115 lbs.

Kendall, the study's first test pilot is fit into the Kids ROCK Chair by the lead therapist Sheri Simpkins with support from Wayne Hanson



We Support ROC Wheels!



You can help provide mobility for children in developing countries.

www.rocwheels.org  
406.556.8065



Proudly distributed in Canada by:  
R & M Health Care Inc.  
790 Redwood Square, Unit 8  
Oakville, Ontario L6L 6N3  
Phone: 866.664.1983 or 905-847-1983 fax 905-847-2708  
www.randmhealthcare.ca info@randmhealthcare.ca

