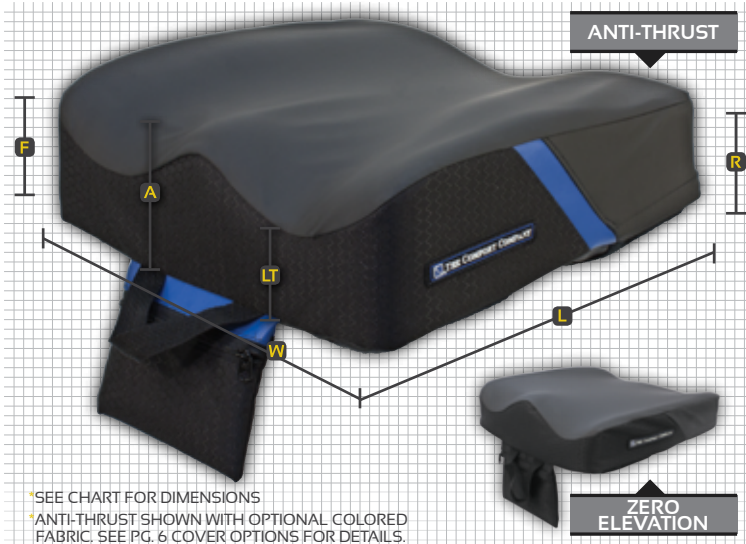


EMBRACE™ SEAT CUSHION

WITH MOLDABLE INSERT

HCPCS CODING: E2624/E2625*
ADJUSTABLE SKIN PROTECTION & POSITIONING



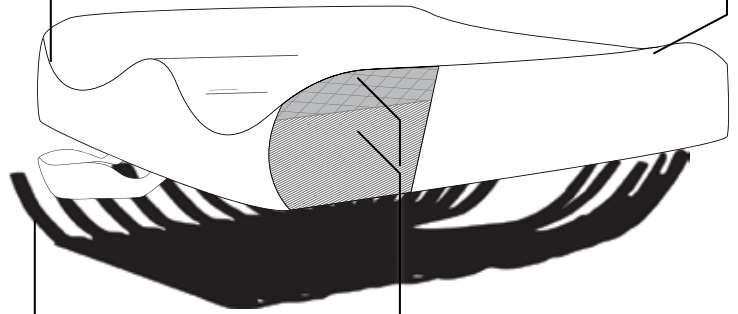
SEE CHART FOR DIMENSIONS
ANTI-THRUST SHOWN WITH OPTIONAL COLORED FABRIC. SEE PG. 6 COVER OPTIONS FOR DETAILS.

PRODUCT FEATURES

*Coding Pending

Deep lateral and medial leg contours promote postural alignment.

Tapered leg adductors increase in width near the back of the cushion to give support to the greater trochanters.



Moldable high strength, lightweight aluminum base enables on-site customization to encourage functional movement while providing postural stability.

Two layers of foam, a contoured molded base foam with a layer of memory foam for comfort and skin protection.

MOLDABLE INSERT

The moldable insert is constructed of high strength, lightweight aluminum. It is moldable to enable additional contour and support. The moldable base maintains its shape under even the most active users.

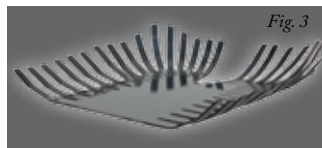
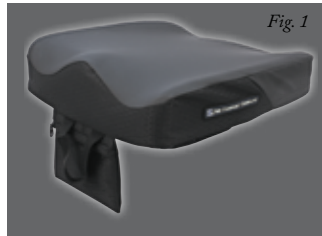
patent pending

This system allows for on-site customization to effectively meet the needs of the person. The dynamic nature of input provides positioning support while allowing for movement. The insert can be re-molded to meet changes in a person's physical and functional needs.

Fig. 1: Embrace™ Cushion with Cover.

Fig. 2: Foam Construction.

Fig. 3: Moldable Base, *patent pending*



COVER OPTIONS



STRETCH-AIR FABRIC: designed for air transmission and heat dissipation. This breathable laminate combines a high-stretch polyester top layer with a waterproof, breathable vapor barrier.



COMFORT-TEK FABRIC: the fluid proof exterior has supple leathery properties that provide an easily cleaned surface and protection for the inner cushion. Comfort-Tek has multi-dimensional stretch and helps alleviate pressure on bony prominences.



COLORED SIDE FABRIC: Six optional colored fabric swatches added to either a Comfort-Tek or Stretch-Air cover. See page 6 for additional information about custom covers.

CUSTOM DESIGNS

CUSTOM EMBRACE CUSHION: HCPCS CODING: E2609

Please contact Customer Service for ordering or additional information. 1-800-564-9248 or order online *prior setup required.*

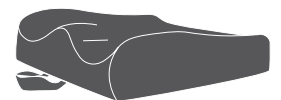
EMBRACE™: CUSTOM DESIGNS WITH MOLDABLE INSERT

part number	w x h	wc size	thickness	wt. limit
CD22-EMM-XXX	CUSTOM	CUSTOM	CUSTOM	CUSTOM

NOTES + "XXX" WILL BE REPLACED WITH A NUMBER FOR THE CUSTOM PART #

CUSHION STYLES

ANTI-THRUST: The Embrace™ Anti-Thrust cushion provides anterior pelvic build-up to prevent forward migration.



ZERO ELEVATION: The Embrace™ Zero Elevation cushion allows for greater freedom of movement for standard positioning issues.



EMBRACE™: ANTI-THRUST
WITH MOLDABLE INSERT

stretch-air part #	comfort-tek part #	w x l	front	rear	abductor	leg trough	wt. limit
EM-SAM-1010	EM-FAM-1010	10" x 10"	4.5"	2"	4.5"	2.5"	100 lbs.
EM-SAM-1012	EM-FAM-1012	10" x 12"	4.5"	2"	4.5"	2.5"	100 lbs.
EM-SAM-1014	EM-FAM-1014	10" x 14"	4.5"	2"	4.5"	2.5"	100 lbs.
EM-SAM-1210	EM-FAM-1210	12" x 10"	4.5"	2"	4.5"	2.5"	100 lbs.
EM-SAM-1212	EM-FAM-1212	12" x 12"	4.5"	2"	4.5"	2.5"	100 lbs.
EM-SAM-1214	EM-FAM-1214	12" x 14"	4.5"	2"	4.5"	2.5"	100 lbs.
EM-SAM-1412	EM-FAM-1412	14" x 12"	4.5"	2"	4.5"	2.5"	150 lbs.
EM-SAM-1414	EM-FAM-1414	14" x 14"	4.5"	2"	4.5"	2.5"	150 lbs.
EM-SAM-1416	EM-FAM-1416	14" x 16"	4.5"	2"	4.5"	2.5"	150 lbs.
EM-SAM-1418	EM-FAM-1418	14" x 18"	4.5"	2"	4.5"	2.5"	150 lbs.
EM-SAM-1614	EM-FAM-1614	16" x 14"	4.5"	2.5"	4.5"	3"	180 lbs.
EM-SAM-1616	EM-FAM-1616	16" x 16"	4.5"	2.5"	4.5"	3"	180 lbs.
EM-SAM-1618	EM-FAM-1618	16" x 18"	4.5"	2.5"	4.5"	3"	180 lbs.
EM-SAM-1620	EM-FAM-1620	16" x 20"	4.5"	2.5"	4.5"	3"	180 lbs.
EM-SAM-1816	EM-FAM-1816	18" x 16"	4.5"	2.5"	4.5"	3"	250 lbs.
EM-SAM-1818	EM-FAM-1818	18" x 18"	4.5"	2.5"	4.5"	3"	250 lbs.
EM-SAM-1820	EM-FAM-1820	18" x 20"	4.5"	2.5"	4.5"	3"	250 lbs.
EM-SAM-2016	EM-FAM-2016	20" x 16"	4.5"	2.5"	4.5"	3"	250 lbs.
EM-SAM-2018	EM-FAM-2018	20" x 18"	4.5"	2.5"	4.5"	3"	250 lbs.
EM-SAM-2020	EM-FAM-2020	20" x 20"	4.5"	2.5"	4.5"	3"	250 lbs.
EM-SAM-2216	EM-FAM-2216	22" x 16"	4.5"	2.5"	4.5"	3"	300 lbs.
EM-SAM-2218	EM-FAM-2218	22" x 18"	4.5"	2.5"	4.5"	3"	300 lbs.
EM-SAM-2220	EM-FAM-2220	22" x 20"	4.5"	2.5"	4.5"	3"	400 lbs.

NOTES

+ CUSHIONS AVAILABLE WITH RIGID INSERTS & EXTRA INCONTINENT PROOF LINER. SEE PAGE 19 FOR DETAILS

EMBRACE™: ZERO ELEVATION
WITH MOLDABLE INSERT

stretch-air part #	comfort-tek part #	w x l	front	rear	abductor	leg trough	wt. limit
EM-SZM-1010	EM-FZM-1010	10" x 10"	3.5"	2"	4"	2"	100 lbs.
EM-SZM-1012	EM-FZM-1012	10" x 12"	3.5"	2"	4"	2"	100 lbs.
EM-SZM-1014	EM-FZM-1014	10" x 14"	3.5"	2"	4"	2"	100 lbs.
EM-SZM-1210	EM-FZM-1210	12" x 10"	3.5"	2"	4"	2"	100 lbs.
EM-SZM-1212	EM-FZM-1212	12" x 12"	3.5"	2"	4"	2"	100 lbs.
EM-SZM-1214	EM-FZM-1214	12" x 14"	3.5"	2"	4"	2"	100 lbs.
EM-SZM-1412	EM-FZM-1412	14" x 12"	3.5"	2"	4"	2"	150 lbs.
EM-SZM-1414	EM-FZM-1414	14" x 14"	3.5"	2"	4"	2"	150 lbs.
EM-SZM-1416	EM-FZM-1416	14" x 16"	3.5"	2"	4"	2"	150 lbs.
EM-SZM-1418	EM-FZM-1418	14" x 18"	3.5"	2"	4"	2"	150 lbs.
EM-SZM-1614	EM-FZM-1614	16" x 14"	3.5"	2"	4"	2"	180 lbs.
EM-SZM-1616	EM-FZM-1616	16" x 16"	3.5"	2"	4"	2"	180 lbs.
EM-SZM-1618	EM-FZM-1618	16" x 18"	3.5"	2"	4"	2"	180 lbs.
EM-SZM-1620	EM-FZM-1620	16" x 20"	3.5"	2"	4"	2"	180 lbs.
EM-SZM-1816	EM-FZM-1816	18" x 16"	3.5"	2"	4"	2"	250 lbs.
EM-SZM-1818	EM-FZM-1818	18" x 18"	3.5"	2"	4"	2"	250 lbs.
EM-SZM-1820	EM-FZM-1820	18" x 20"	3.5"	2"	4"	2"	250 lbs.
EM-SZM-2016	EM-FZM-2016	20" x 16"	3.5"	2"	4"	2"	250 lbs.
EM-SZM-2018	EM-FZM-2018	20" x 18"	3.5"	2"	4"	2"	250 lbs.
EM-SZM-2020	EM-FZM-2020	20" x 20"	3.5"	2"	4"	2"	250 lbs.
EM-SZM-2216	EM-FZM-2216	22" x 16"	3.5"	2"	4"	2"	300 lbs.
EM-SZM-2218	EM-FZM-2218	22" x 18"	3.5"	2"	4"	2"	300 lbs.
EM-SZM-2220	EM-FZM-2220	22" x 20"	3.5"	2"	4"	2"	400 lbs.

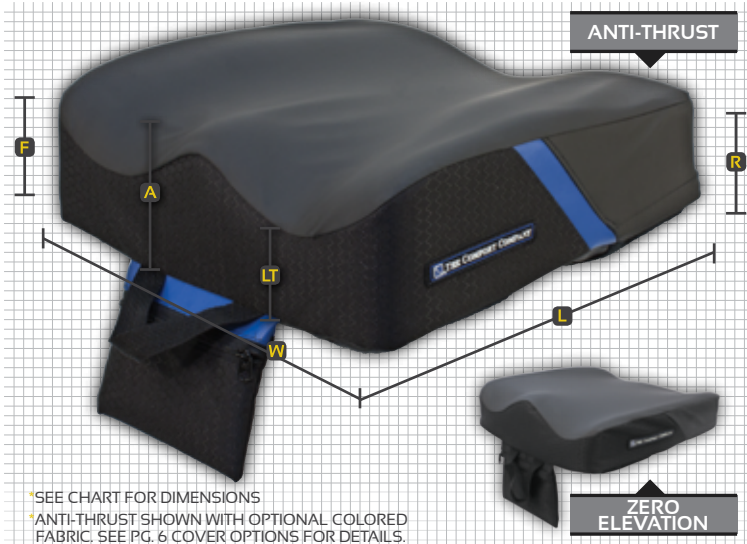
NOTES

+ CUSHIONS AVAILABLE WITH RIGID INSERTS & EXTRA INCONTINENT PROOF LINER. SEE PAGE 19 FOR DETAILS

EMBRACE™ SEAT CUSHION

WITHOUT MOLDABLE INSERT

HCPCS CODING: E2607/E2608*
SKIN PROTECTION & POSITIONING



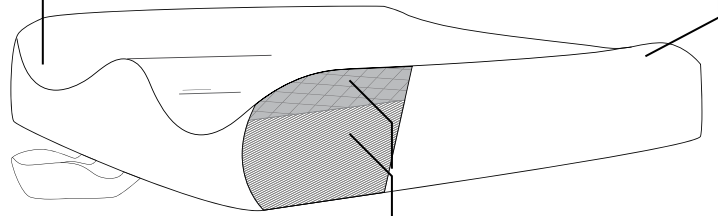
SEE CHART FOR DIMENSIONS
ANTI-THRUST SHOWN WITH OPTIONAL COLORED FABRIC. SEE PG. 6 COVER OPTIONS FOR DETAILS.

PRODUCT FEATURES

*Coding Pending

Deep lateral and medial leg contours promote postural alignment.

Tapered leg adductors increase in width near the back of the cushion to give support to the greater trochanters.



Two layers of foam, a contoured molded base foam with a layer of memory foam for comfort and skin protection.

COVER OPTIONS



STRETCH-AIR FABRIC: designed for air transmission and heat dissipation. This breathable laminate combines a high-stretch polyester top layer with a waterproof, breathable vapor barrier.

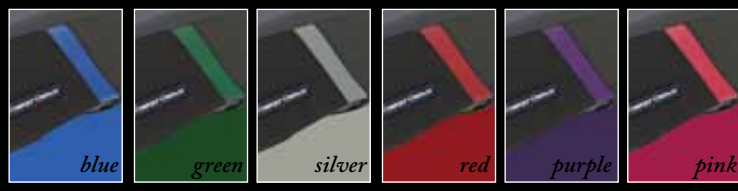


COMFORT-TEK FABRIC: the fluid proof exterior has supple leathery properties that provide an easily cleaned surface and protection for the inner cushion. Comfort-Tek has multi-dimensional stretch and helps alleviate pressure on bony prominences.



COLORED SIDE FABRIC: The Comfort-Tek and Stretch-Air covers are available with one of six accent colors: Blue, Green, Silver, Red, Purple or Pink, *see swatches below**. Custom color fabrics are used as accents to the cushion sides and the front pouch.

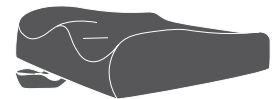
Additional fee applies, please contact a Customer Service representative or order online www.ComfortCompany.com. *Note:* cushions will come with black as standard unless custom color is ordered.



*Actual colors may vary due to printing.

CUSHION STYLES

ANTI-THRUST: The Embrace™ Anti-Thrust cushion provides anterior pelvic build-up to prevent forward migration.



ZERO ELEVATION: The Embrace™ Zero Elevation cushion allows for greater freedom of movement for standard positioning issues.



CUSTOM DESIGNS

CUSTOM EMBRACE CUSHION: HCPCS CODING: E2609

- Please contact Customer Service for ordering or additional information. 1-800-564-9248 or order online *prior setup required.*

EMBRACE™: CUSTOM DESIGNS WITHOUT MOLDABLE INSERT

part number	w x h	wc size	thickness	wt. limit
CD22-EM-XXX	CUSTOM	CUSTOM	CUSTOM	CUSTOM

NOTES + "XXX" WILL BE REPLACED WITH A NUMBER FOR THE CUSTOM PART #

EMBRACE™: ANTI-THRUST
WITHOUT MOLDABLE INSERT

stretch-air part #	comfort-tek part #	w x l	front	rear	abductor	leg trough	wt. limit
EM-SA-1010	EM-FA-1010	10" x 10"	4.5"	2"	4.5"	2.5"	100 lbs.
EM-SA-1012	EM-FA-1012	10" x 12"	4.5"	2"	4.5"	2.5"	100 lbs.
EM-SA-1014	EM-FA-1014	10" x 14"	4.5"	2"	4.5"	2.5"	100 lbs.
EM-SA-1210	EM-FA-1210	12" x 10"	4.5"	2"	4.5"	2.5"	100 lbs.
EM-SA-1212	EM-FA-1212	12" x 12"	4.5"	2"	4.5"	2.5"	100 lbs.
EM-SA-1214	EM-FA-1214	12" x 14"	4.5"	2"	4.5"	2.5"	100 lbs.
EM-SA-1412	EM-FA-1412	14" x 12"	4.5"	2"	4.5"	2.5"	150 lbs.
EM-SA-1414	EM-FA-1414	14" x 14"	4.5"	2"	4.5"	2.5"	150 lbs.
EM-SA-1416	EM-FA-1416	14" x 16"	4.5"	2"	4.5"	2.5"	150 lbs.
EM-SA-1418	EM-FA-1418	14" x 18"	4.5"	2"	4.5"	2.5"	150 lbs.
EM-SA-1614	EM-FA-1614	16" x 14"	4.5"	2.5"	4.5"	3"	180 lbs.
EM-SA-1616	EM-FA-1616	16" x 16"	4.5"	2.5"	4.5"	3"	180 lbs.
EM-SA-1618	EM-FA-1618	16" x 18"	4.5"	2.5"	4.5"	3"	180 lbs.
EM-SA-1620	EM-FA-1620	16" x 20"	4.5"	2.5"	4.5"	3"	180 lbs.
EM-SA-1816	EM-FA-1816	18" x 16"	4.5"	2.5"	4.5"	3"	250 lbs.
EM-SA-1818	EM-FA-1818	18" x 18"	4.5"	2.5"	4.5"	3"	250 lbs.
EM-SA-1820	EM-FA-1820	18" x 20"	4.5"	2.5"	4.5"	3"	250 lbs.
EM-SA-2016	EM-FA-2016	20" x 16"	4.5"	2.5"	4.5"	3"	250 lbs.
EM-SA-2018	EM-FA-2018	20" x 18"	4.5"	2.5"	4.5"	3"	250 lbs.
EM-SA-2020	EM-FA-2020	20" x 20"	4.5"	2.5"	4.5"	3"	250 lbs.
EM-SA-2216	EM-FA-2216	22" x 16"	4.5"	2.5"	4.5"	3"	300 lbs.
EM-SA-2218	EM-FA-2218	22" x 18"	4.5"	2.5"	4.5"	3"	300 lbs.
EM-SA-2220	EM-FA-2220	22" x 20"	4.5"	2.5"	4.5"	3"	400 lbs.

NOTES

+ CUSHIONS AVAILABLE WITH RIGID INSERTS & EXTRA INCONTINENT PROOF LINER. SEE PAGE 19 FOR DETAILS

EMBRACE™: ZERO ELEVATION
WITHOUT MOLDABLE INSERT

stretch-air part #	comfort-tek part #	w x l	front	rear	abductor	leg trough	wt. limit
EM-SZ-1010	EM-FZ-1010	10" x 10"	3.5"	2"	4"	2"	100 lbs.
EM-SZ-1012	EM-FZ-1012	10" x 12"	3.5"	2"	4"	2"	100 lbs.
EM-SZ-1014	EM-FZ-1014	10" x 14"	3.5"	2"	4"	2"	100 lbs.
EM-SZ-1210	EM-FZ-1210	12" x 10"	3.5"	2"	4"	2"	100 lbs.
EM-SZ-1212	EM-FZ-1212	12" x 12"	3.5"	2"	4"	2"	100 lbs.
EM-SZ-1214	EM-FZ-1214	12" x 14"	3.5"	2"	4"	2"	100 lbs.
EM-SZ-1412	EM-FZ-1412	14" x 12"	3.5"	2"	4"	2"	150 lbs.
EM-SZ-1414	EM-FZ-1414	14" x 14"	3.5"	2"	4"	2"	150 lbs.
EM-SZ-1416	EM-FZ-1416	14" x 16"	3.5"	2"	4"	2"	150 lbs.
EM-SZ-1418	EM-FZ-1418	14" x 18"	3.5"	2"	4"	2"	150 lbs.
EM-SZ-1614	EM-FZ-1614	16" x 14"	3.5"	2"	4"	2"	180 lbs.
EM-SZ-1616	EM-FZ-1616	16" x 16"	3.5"	2"	4"	2"	180 lbs.
EM-SZ-1618	EM-FZ-1618	16" x 18"	3.5"	2"	4"	2"	180 lbs.
EM-SZ-1620	EM-FZ-1620	16" x 20"	3.5"	2"	4"	2"	180 lbs.
EM-SZ-1816	EM-FZ-1816	18" x 16"	3.5"	2"	4"	2"	250 lbs.
EM-SZ-1818	EM-FZ-1818	18" x 18"	3.5"	2"	4"	2"	250 lbs.
EM-SZ-1820	EM-FZ-1820	18" x 20"	3.5"	2"	4"	2"	250 lbs.
EM-SZ-2016	EM-FZ-2016	20" x 16"	3.5"	2"	4"	2"	250 lbs.
EM-SZ-2018	EM-FZ-2018	20" x 18"	3.5"	2"	4"	2"	250 lbs.
EM-SZ-2020	EM-FZ-2020	20" x 20"	3.5"	2"	4"	2"	250 lbs.
EM-SZ-2216	EM-FZ-2216	22" x 16"	3.5"	2"	4"	2"	300 lbs.
EM-SZ-2218	EM-FZ-2218	22" x 18"	3.5"	2"	4"	2"	300 lbs.
EM-SZ-2220	EM-FZ-2220	22" x 20"	3.5"	2"	4"	2"	400 lbs.

NOTES

+ CUSHIONS AVAILABLE WITH RIGID INSERTS & EXTRA INCONTINENT PROOF LINER. SEE PAGE 19 FOR DETAILS