

# THE ALL NEW ACTA-BACK

[ACTABACK.COMFORTCOMPANY.COM](http://ACTABACK.COMFORTCOMPANY.COM)

 **THE COMFORT COMPANY**

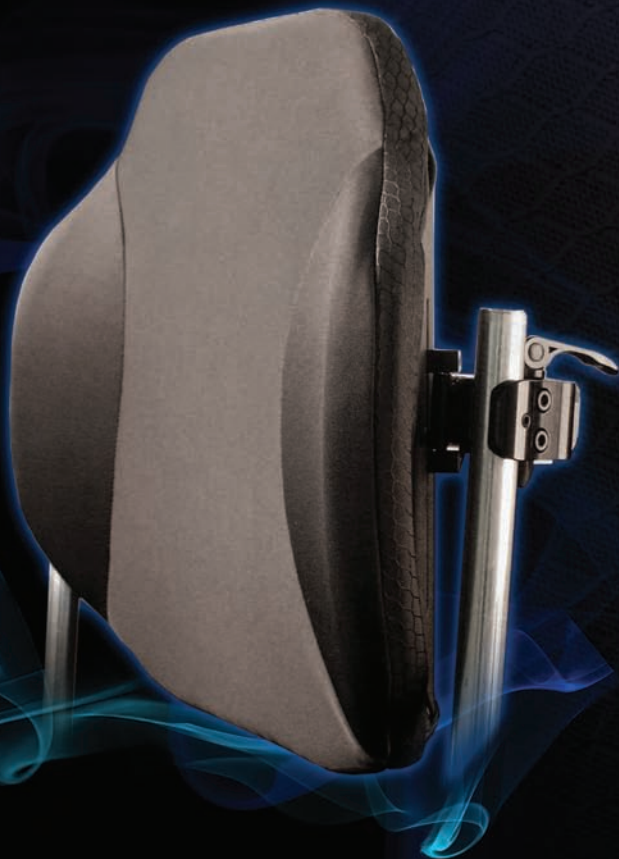
*Quietly making lives more comfortable.®*

# ACTA-BACK

HCPCS Code: E2613 / E2614

## NEW FEATURES

- Lightweight aluminum shell.
- Hip and scapula relief.
- 3 layer foam construction, including Visco topper layer.
- Headrests and laterals can be attached to all Acta-Back models.



# ACTA-BACK

DEEP

HCPCS Code: E2615/ E2616

Available for sale Feb. 1st, 2010

## NEW FEATURES

- Laterals may be adjusted for width up to a total of 2".
- Thin profile trunk stabilizer pads.
- Lightweight aluminum shell.
- Hip and scapula relief.
- 3 layer foam construction, including Visco topper layer.



# ACTA-BACK

# ACTA-BACK DEEP

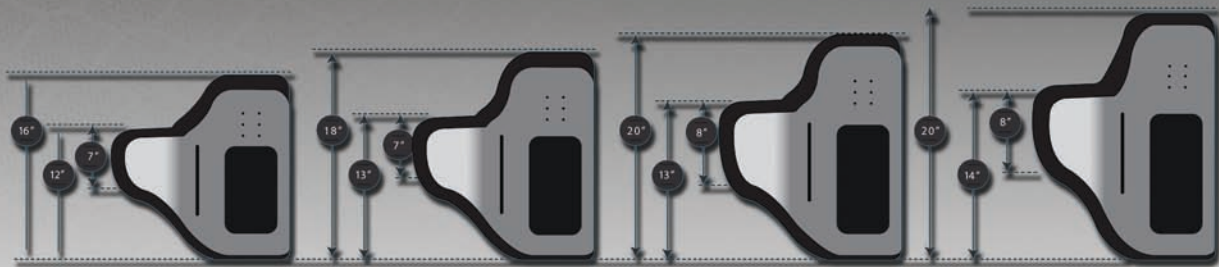


16" TALL

18" TALL

20" TALL

22" TALL



16" TALL

18" TALL

20" TALL

22" TALL

## COMPASS HARDWARE & MOLDABLE CENTER SECTION



### COMPASS HARDWARE

Compass Hardware: Patented #7,104,610

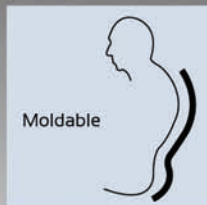
- Patented Compass Hardware is fully adjustable for height, depth, and angle of recline.
- Requires 1.5" of space on each cane for mounting purposes.
- All adjustments can be made while the user is seated in the wheelchair, eliminating the need for multiple transfers during the fitting process.
- Quick-release feature allows backrest to be removed vertically within seconds.
- Quick-release feature allows backrest to be removed vertically within seconds.
- Hardware may be installed within minutes and fits 3/4", 7/8", and 1" tubing.
- New positive locking feature for angle rotation.



Quick Release Feature



Rigid



Moldable

### MOLDABLE CENTER SECTION

- Backrest pad may be removed and molded, increasing support and comfort to accommodate lumbar, scoliosis, and kyphosis needs.
- Moldable Aluminum stays are offset from the center, removing pressure points from the spine.

Patented Design: #6,733,074

## ACTA-BACK ACCESSORIES

### LATERALS AND HEADREST



### LATERALS

HCPCS Code:  
E0956 & E1028

- 8" of pad width adjustments (4" per side)
- Gear teeth allow laterals to adjust in 0.2" increments and lock tightly into place.



### HEADREST

HCPCS Code: E0955

- Fully adjustable headrest provides optimal height, tilt, and angle positioning.
- Positive lock mechanism assures secure positioning and allows for removal of unit within seconds.

BACK HEIGHT: 10" Tall

FABRIC TYPE: *Comfort-Tek*

HARDWARE TYPE: *Compass*

BACK HEIGHT: 10" Tall

FABRIC TYPE: *Stretch-Air*

HARDWARE TYPE: *Compass*

MODEL NUMBER	HEIGHT	WEIGHT	WC SIZE	THICKNESS	WT. LIMIT
<b>BK-MLFC-14</b>	9.5"	2.75 lbs.	13 - 15	2.5"	250 lbs.
<b>BK-MLFC-16</b>	9.5"	2.85 lbs.	15 - 17	2.5"	250 lbs.
<b>BK-MLFC-18</b>	9.5"	3.05 lbs.	17 - 19	2.5"	250 lbs.
<b>BK-MLFX-20</b>	9.5"	3.15 lbs.	19 - 21	2.5"	300 lbs.

MODEL NUMBER	HEIGHT	WEIGHT	WC SIZE	THICKNESS	WT. LIMIT
<b>BK-MLUC-14</b>	9.5"	2.75 lbs.	13 - 15	2.5"	250 lbs.
<b>BK-MLUC-16</b>	9.5"	2.85 lbs.	15 - 17	2.5"	250 lbs.
<b>BK-MLUC-18</b>	9.5"	3.05 lbs.	17 - 19	2.5"	250 lbs.
<b>BK-MLUX-20</b>	9.5"	3.15 lbs.	19 - 21	2.5"	300 lbs.

BACK HEIGHT: 16" Tall

FABRIC TYPE: *Comfort-Tek*

HARDWARE TYPE: *Compass*

BACK HEIGHT: 16" Tall

FABRIC TYPE: *Stretch-Air*

HARDWARE TYPE: *Compass*

MODEL NUMBER	HEIGHT	WEIGHT	WC SIZE	THICKNESS	WT. LIMIT
<b>BK-MFC-16</b>	16"	4.4 lbs.	15 - 17	2.5"	250 lbs.
<b>BK-MFC-18</b>	16"	4.7 lbs.	17 - 19	2.5"	250 lbs.
<b>BK-MFC-20</b>	16"	4.95 lbs.	19 - 21	2.5"	300 lbs.
<b>BK-MFC-22</b>	16"	5.25 lbs.	21 - 23	2.5"	350 lbs.
<b>BK-MFX-24</b>	16"	5.8 lbs.	23 - 25	2.5"	400 lbs.

MODEL NUMBER	HEIGHT	WEIGHT	WC SIZE	THICKNESS	WT. LIMIT
<b>BK-MUC-16</b>	16"	4.4 lbs.	15 - 17	2.5"	250 lbs.
<b>BK-MUC-18</b>	16"	4.7 lbs.	17 - 19	2.5"	250 lbs.
<b>BK-MUC-20</b>	16"	4.95 lbs.	19 - 21	2.5"	300 lbs.
<b>BK-MUC-22</b>	16"	5.25 lbs.	21 - 23	2.5"	350 lbs.
<b>BK-MUX-24</b>	16"	5.8 lbs.	23 - 25	2.5"	400 lbs.

BACK HEIGHT: 18" Tall

FABRIC TYPE: *Comfort-Tek*

HARDWARE TYPE: *Compass*

BACK HEIGHT: 18" Tall

FABRIC TYPE: *Stretch-Air*

HARDWARE TYPE: *Compass*

MODEL NUMBER	HEIGHT	WEIGHT	WC SIZE	THICKNESS	WT. LIMIT
<b>BK-M18FC-16</b>	18"	4.8 lbs.	15 - 17	2.5"	250 lbs.
<b>BK-M18FC-18</b>	18"	5.15 lbs.	17 - 19	2.5"	250 lbs.
<b>BK-M18FC-20</b>	18"	5.4 lbs.	19 - 21	2.5"	300 lbs.
<b>BK-M18FC-22</b>	18"	5.7 lbs.	21 - 23	2.5"	350 lbs.
<b>BK-M18FX-24</b>	18"	6.25 lbs.	23 - 25	2.5"	400 lbs.

MODEL NUMBER	HEIGHT	WEIGHT	WC SIZE	THICKNESS	WT. LIMIT
<b>BK-M18UC-16</b>	18"	4.8 lbs.	15 - 17	2.5"	250 lbs.
<b>BK-M18UC-18</b>	18"	5.15 lbs.	17 - 19	2.5"	250 lbs.
<b>BK-M18UC-20</b>	18"	5.4 lbs.	19 - 21	2.5"	300 lbs.
<b>BK-M18UC-22</b>	18"	5.7 lbs.	21 - 23	2.5"	350 lbs.
<b>BK-M18UX-24</b>	18"	6.25 lbs.	23 - 25	2.5"	400 lbs.

BACK HEIGHT: 20" Tall

FABRIC TYPE: *Comfort-Tek*

HARDWARE TYPE: *Compass*

BACK HEIGHT: 20" Tall

FABRIC TYPE: *Stretch-Air*

HARDWARE TYPE: *Compass*

MODEL NUMBER	HEIGHT	WEIGHT	WC SIZE	THICKNESS	WT. LIMIT
<b>BK-M20FC-16</b>	20"	5.2 lbs.	15 - 17	2.5"	250 lbs.
<b>BK-M20FC-18</b>	20"	5.45 lbs.	17 - 19	2.5"	250 lbs.
<b>BK-M20FC-20</b>	20"	5.85 lbs.	19 - 21	2.5"	300 lbs.
<b>BK-M20FC-22</b>	20"	6.2 lbs.	21 - 23	2.5"	350 lbs.
<b>BK-M20FX-24</b>	20"	6.75 lbs.	23 - 25	2.5"	400 lbs.

MODEL NUMBER	HEIGHT	WEIGHT	WC SIZE	THICKNESS	WT. LIMIT
<b>BK-M20UC-16</b>	20"	5.2 lbs.	15 - 17	2.5"	250 lbs.
<b>BK-M20UC-18</b>	20"	5.45 lbs.	17 - 19	2.5"	250 lbs.
<b>BK-M20UC-20</b>	20"	5.85 lbs.	19 - 21	2.5"	300 lbs.
<b>BK-M20UC-22</b>	20"	6.2 lbs.	21 - 23	2.5"	350 lbs.
<b>BK-M20UX-24</b>	20"	6.75 lbs.	23 - 25	2.5"	400 lbs.

BACK HEIGHT: 22" Tall

FABRIC TYPE: *Comfort-Tek*

HARDWARE TYPE: *Compass*

BACK HEIGHT: 22" Tall

FABRIC TYPE: *Stretch-Air*

HARDWARE TYPE: *Compass*

MODEL NUMBER	HEIGHT	WEIGHT	WC SIZE	THICKNESS	WT. LIMIT
<b>BK-MTFC-16</b>	22"	5.55 lbs.	15 - 17	2.5"	250 lbs.
<b>BK-MTFC-18</b>	22"	5.8 lbs.	17 - 19	2.5"	250 lbs.
<b>BK-MTFC-20</b>	22"	6.2 lbs.	19 - 21	2.5"	300 lbs.
<b>BK-MTFC-22</b>	22"	6.5 lbs.	21 - 23	2.5"	350 lbs.
<b>BK-MTFX-24</b>	22"	7 lbs.	23 - 25	2.5"	400 lbs.

MODEL NUMBER	HEIGHT	WEIGHT	WC SIZE	THICKNESS	WT. LIMIT
<b>BK-MTUC-16</b>	22"	5.55 lbs.	15 - 17	2.5"	250 lbs.
<b>BK-MTUC-18</b>	22"	5.8 lbs.	17 - 19	2.5"	250 lbs.
<b>BK-MTUC-20</b>	22"	6.2 lbs.	19 - 21	2.5"	300 lbs.
<b>BK-MTUC-22</b>	22"	6.5 lbs.	21 - 23	2.5"	350 lbs.
<b>BK-MTUX-24</b>	22"	7 lbs.	23 - 25	2.5"	400 lbs.

# ACTA-BACK DEEP

HCPCS Code: E2615/E2616

BACK HEIGHT: 16" Tall

FABRIC TYPE: *Comfort-Tek*

HARDWARE TYPE: *Compass*

MODEL NUMBER	HEIGHT	WEIGHT	WC SIZE	THICKNESS	WT. LIMIT
<b>BK-MDFC-18</b>	16"	4.9 lbs.	15 - 17	2.5"	250 lbs.
<b>BK-MDFC-18</b>	16"	5.2 lbs.	17 - 19	2.5"	250 lbs.
<b>BK-MDFC-20</b>	16"	5.45 lbs.	19 - 21	2.5"	300 lbs.
<b>BK-MDFC-22</b>	16"	5.75 lbs.	21 - 23	2.5"	350 lbs.
<b>BK-MDFX-24</b>	16"	6.3 lbs.	23 - 25	2.5"	400 lbs.

BACK HEIGHT: 16" Tall

FABRIC TYPE: *Stretch-Air*

HARDWARE TYPE: *Compass*

MODEL NUMBER	HEIGHT	WEIGHT	WC SIZE	THICKNESS	WT. LIMIT
<b>BK-MDUC-18</b>	16"	4.9 lbs.	15 - 17	2.5"	250 lbs.
<b>BK-MDUC-18</b>	16"	5.2 lbs.	17 - 19	2.5"	250 lbs.
<b>BK-MDUC-20</b>	16"	5.45 lbs.	19 - 21	2.5"	300 lbs.
<b>BK-MDUC-22</b>	16"	5.75 lbs.	21 - 23	2.5"	350 lbs.
<b>BK-MDUX-24</b>	16"	6.3 lbs.	23 - 25	2.5"	400 lbs.

BACK HEIGHT: 18" Tall

FABRIC TYPE: *Comfort-Tek*

HARDWARE TYPE: *Compass*

MODEL NUMBER	HEIGHT	WEIGHT	WC SIZE	THICKNESS	WT. LIMIT
<b>BK-MD18FC-16</b>	18"	5.3 lbs.	15 - 17	2.5"	250 lbs.
<b>BK-MD18FC-18</b>	18"	5.65 lbs.	17 - 19	2.5"	250 lbs.
<b>BK-MD18FC-20</b>	18"	5.9 lbs.	19 - 21	2.5"	300 lbs.
<b>BK-MD18FC-22</b>	18"	6.2 lbs.	21 - 23	2.5"	350 lbs.
<b>BK-MD18FX-24</b>	18"	6.75 lbs.	23 - 25	2.5"	400 lbs.

BACK HEIGHT: 18" Tall

FABRIC TYPE: *Stretch-Air*

HARDWARE TYPE: *Compass*

MODEL NUMBER	HEIGHT	WEIGHT	WC SIZE	THICKNESS	WT. LIMIT
<b>BK-MD18UC-16</b>	18"	5.3 lbs.	15 - 17	2.5"	250 lbs.
<b>BK-MD18UC-18</b>	18"	5.65 lbs.	17 - 19	2.5"	250 lbs.
<b>BK-MD18UC-20</b>	18"	5.9 lbs.	19 - 21	2.5"	300 lbs.
<b>BK-MD18UC-22</b>	18"	6.2 lbs.	21 - 23	2.5"	350 lbs.
<b>BK-MD18UX-24</b>	18"	6.75 lbs.	23 - 25	2.5"	400 lbs.

BACK HEIGHT: 20" Tall

FABRIC TYPE: *Comfort-Tek*

HARDWARE TYPE: *Compass*

MODEL NUMBER	HEIGHT	WEIGHT	WC SIZE	THICKNESS	WT. LIMIT
<b>BK-MD20FC-16</b>	20"	5.7 lbs.	15 - 17	2.5"	250 lbs.
<b>BK-MD20FC-18</b>	20"	5.95 lbs.	17 - 19	2.5"	250 lbs.
<b>BK-MD20FC-20</b>	20"	6.35 lbs.	19 - 21	2.5"	300 lbs.
<b>BK-MD20FC-22</b>	20"	6.7 lbs.	21 - 23	2.5"	350 lbs.
<b>BK-MD20FX-24</b>	20"	7.25 lbs.	23 - 25	2.5"	400 lbs.

BACK HEIGHT: 20" Tall

FABRIC TYPE: *Stretch-Air*

HARDWARE TYPE: *Compass*

MODEL NUMBER	HEIGHT	WEIGHT	WC SIZE	THICKNESS	WT. LIMIT
<b>BK-MD20UC-16</b>	20"	5.7 lbs.	15 - 17	2.5"	250 lbs.
<b>BK-MD20UC-18</b>	20"	5.95 lbs.	17 - 19	2.5"	250 lbs.
<b>BK-MD20UC-20</b>	20"	6.35 lbs.	19 - 21	2.5"	300 lbs.
<b>BK-MD20UC-22</b>	20"	6.7 lbs.	21 - 23	2.5"	350 lbs.
<b>BK-MD20UX-24</b>	20"	7.25 lbs.	23 - 25	2.5"	400 lbs.

BACK HEIGHT: 22" Tall

FABRIC TYPE: *Comfort-Tek*

HARDWARE TYPE: *Compass*

MODEL NUMBER	HEIGHT	WEIGHT	WC SIZE	THICKNESS	WT. LIMIT
<b>BK-MD22FC-16</b>	22"	6.05 lbs.	15 - 17	2.5"	250 lbs.
<b>BK-MD22FC-18</b>	22"	6.3 lbs.	17 - 19	2.5"	250 lbs.
<b>BK-MD22FC-20</b>	22"	6.7 lbs.	19 - 21	2.5"	300 lbs.
<b>BK-MD22FC-22</b>	22"	7.0 lbs.	21 - 23	2.5"	350 lbs.
<b>BK-MDTFX-24</b>	22"	7.5 lbs.	23 - 25	2.5"	400 lbs.

BACK HEIGHT: 22" Tall

FABRIC TYPE: *Stretch-Air*

HARDWARE TYPE: *Compass*

MODEL NUMBER	HEIGHT	WEIGHT	WC SIZE	THICKNESS	WT. LIMIT
<b>BK-MD22UC-16</b>	22"	6.05 lbs.	15 - 17	2.5"	250 lbs.
<b>BK-MD22UC-18</b>	22"	6.3 lbs.	17 - 19	2.5"	250 lbs.
<b>BK-MD22UC-20</b>	22"	6.7 lbs.	19 - 21	2.5"	300 lbs.
<b>BK-MD22UC-22</b>	22"	7.0 lbs.	21 - 23	2.5"	350 lbs.
<b>BK-MD22UX-24</b>	22"	7.5 lbs.	23 - 25	2.5"	400 lbs.



---

[ACTABACK.COMFORTCOMPANY.COM](http://ACTABACK.COMFORTCOMPANY.COM)

CALL 800.564.9248 - FAX 406.522.8563

509 S. 22ND AVE - BOZEMAN, MT 59718

---